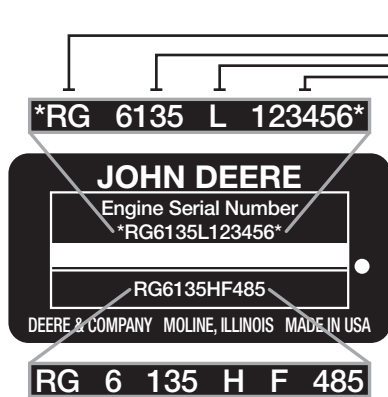


Identification plate



Model designation key

Below is a key for the engine models shown in this guide.

A model designated as 6135H is a 6-cylinder, 13.5-liter turbocharged and aftercooled, air-to-air engine. A model designated as a 4045T is a 4-cylinder, 4.5-liter turbocharged engine.

6135H

Indicates air intake system
Displacement in liters
Number of cylinders

EPA Tier 1/EU Stage I	PowerTech technology
EPA Tier 2/EU Stage II	PowerTech technology
EPA Tier 3/EU Stage III A	PowerTech M, PowerTech E, or PowerTech Plus technology

Factory manufactured by

RG	Waterloo, Iowa, USA
CD	Saran, France
PE	Torreón, Mexico
PY	Pune, India

Number of cylinders and total displacement

6135	6 cylinders, 13.5 liters
6125	6 cylinders, 12.5 liters
6090	6 cylinders, 9.0 liters
6081	6 cylinders, 8.1 liters
6068	6 cylinders, 6.8 liters
4045	4 cylinders, 4.5 liters
4039	4 cylinders, 3.9 liters
5030	5 cylinders, 3.0 liters
3029	3 cylinders, 2.9 liters
4024	4 cylinders, 2.4 liters

Emissions certification

A, B, D, H, T	Non-emissions regulated
C, D, E, F, H, T	Tier 1/Stage I
D, G, H, J, K, T	Tier 2/Stage II
L, M, N, P	Tier 3/Stage III A
R, U, V, W, X, Y, Z	Interim Tier 4/Stage III B and Final Tier 4/Stage IV

Engine serial number

Emissions certification

120, 160, 220, 425	Non-emissions regulated
001, 150, 180, 250	Tier 1/Stage I
270, 275, 070, 475	Tier 2/Stage II
280, 285, 485	Tier 3/Stage III A
281, 290, 295, 495	Interim Tier 4/Stage III B

Engine controls (starting with some Tier 2/Stage II engines)

0 or 1	Mechanical controls
4 or 5	Electronic controls

Valves per cylinder (starting with some Tier 2/Stage II engines)

2	2-valve cylinder head
4	4-valve cylinder head

User type

F	OEM (John Deere Power Systems)
XX	Other letters are used to identify John Deere equipment manufacturing locations

Air intake system

D	Naturally aspirated
T	Turbocharged
A	Turbocharged and aftercooled, air-to-water
H	Turbocharged and aftercooled, air-to-air